

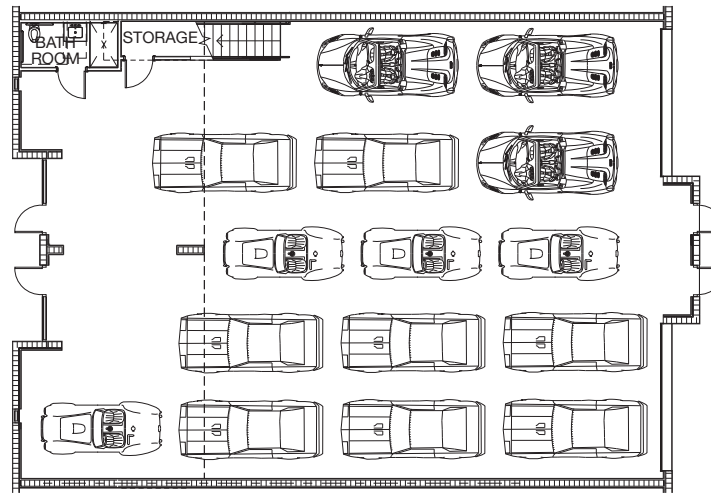


## GRAND FLOOR PLAN

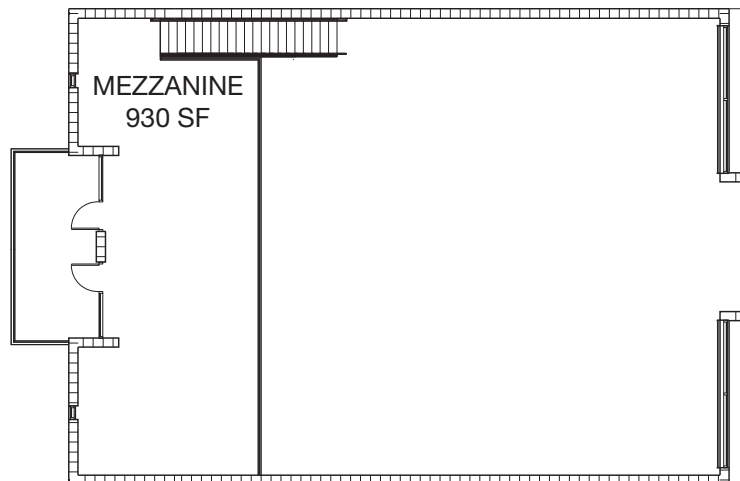
UNITS 11 & 12

GROUND FLOOR  
3,325 SF

74'10" x 51'



GROUND FLOOR



MEZZANINE LEVEL

BALCONY  
198 SF

### SQUARE FOOTAGE TOTALS

GROUND FLOOR	3,325
BATH	50
STORAGE	66
MEZZANINE	930
BALCONY	198
<b>GRAND TOTAL:</b>	<b>4,569</b>

